

Customer :

customer

Customer part :

customer part

Comment :

Comment

S1=0.01

S2=0.05

Tmax=445

Tp S2=484.0

PI=0.12

HI=250

Sample =8070.3

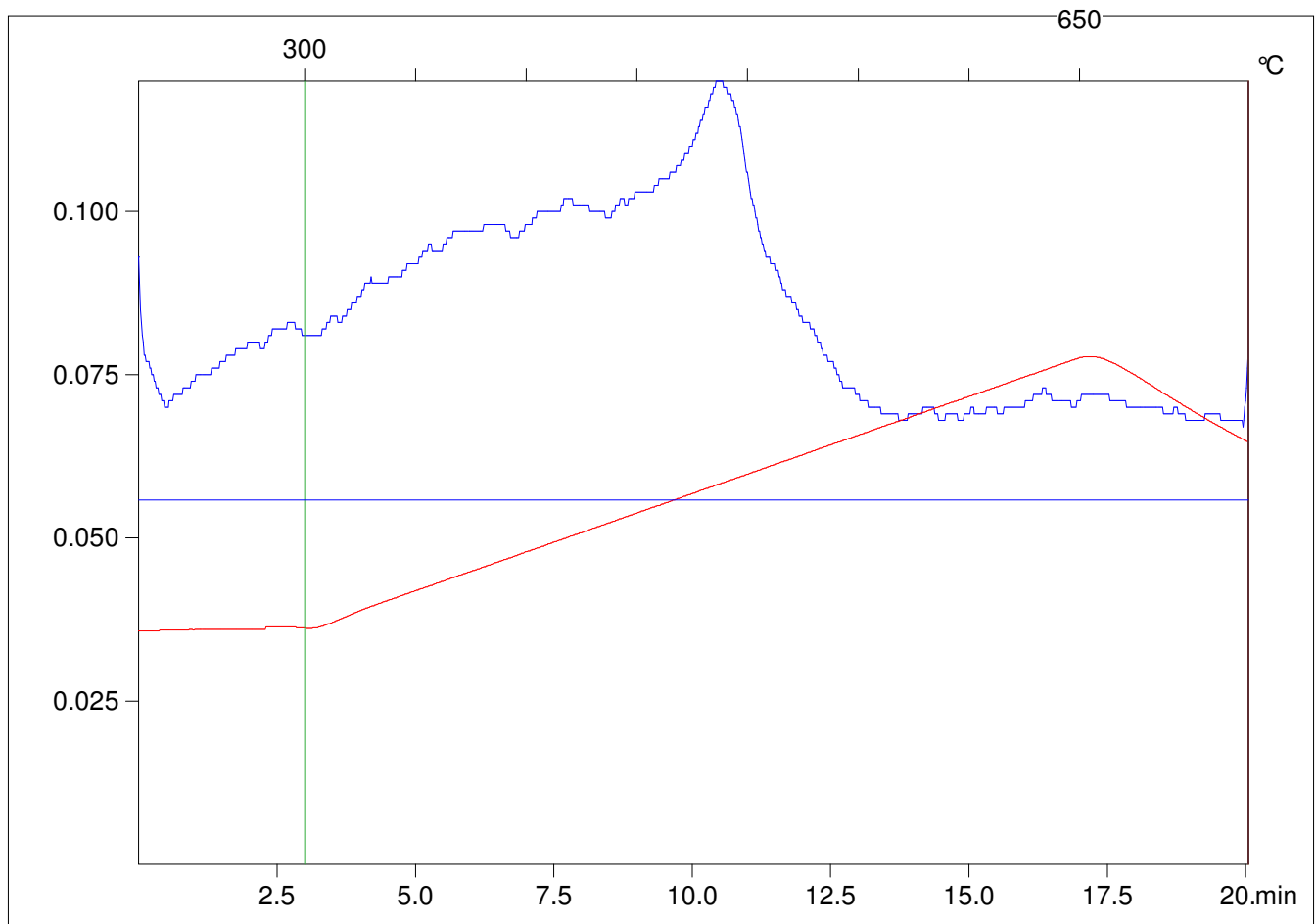
Method =Bulk Rock

Cycle=Basic

KFID(10*9)=1167

Qty =70.7

TOC=0.02



C:\VINC\PK141015\PK015.R00 : FID pyrolysis graphic

State

Pyro Status

Oxi Status